



**REGIONAL SPECIALISED METEOROLOGICAL CENTRE-TROPICAL CYCLONES, NEW DELHI  
TROPICAL WEATHER OUTLOOK**

**DEMS-RSMC TROPICAL CYCLONES NEW DELHI DATED 03.06.2023**

**TROPICAL WEATHER OUTLOOK FOR NORTH INDIAN OCEAN (THE BAY OF BENGAL AND THE ARABIAN SEA) VALID FOR NEXT 120 HOURS ISSUED AT 0600 UTC OF 03.06.2023 BASED ON 0300 UTC OF 03.06.2023.**

**BAY OF BENGAL:**

YESTERDAY'S CYCLONIC CIRCULATION OVER EASTCENTRAL BAY OF BENGAL OFF MYANMAR COAST PERSISTED OVER THE SAME REGION AT 0300 UTC OF TODAY, THE 3<sup>rd</sup> JUNE 2023.

SCATTERED TO BROKEN LOW AND MEDIUM CLOUDS WITH EMBEDDED INTENSE TO VERY INTENSE CONVECTION LAY OVER CENTRAL AND ADJOINING SOUTHEAST BAY OF BENGAL AND ANDAMAN SEA. SCATTERED LOW AND MEDIUM CLOUDS WITH EMBEDDED MODERATE TO INTENSE CONVECTION LAY OVER SOUTHWEST BAY OF BENGAL AND ISOLATED WEAK TO MODERATE CONVECTION LAY OVER NORTH BAY OF BENGAL.

**PROBABILITY OF CYCLOGENESIS (FORMATION OF DEPRESSION) DURING NEXT 120 HRS:**

24 HOURS	24-48 HOURS	48-72 HOURS	72-96 HOURS	96-120 HOURS
NIL	NIL	NIL	NIL	NIL

**ARABIAN SEA:**

A CYCLONIC CIRCULATION IS LIKELY TO DEVELOP OVER SOUTHEAST ARABIAN SEA AROUND 5<sup>TH</sup> JUNE. UNDER IT'S INFLUENCE, A LOW PRESSURE AREA IS LIKELY TO FORM OVER THE SAME REGION DURING SUBSEQUENT 48 HOURS.

SCATTERED TO BROKEN LOW AND MEDIUM CLOUDS WITH EMBEDDED INTENSE TO VERY INTENSE CONVECTION LAY OVER CENTRAL AND SOUTH ARABIAN SEA. SCATTERED LOW AND MEDIUM CLOUDS WITH EMBEDDED MODERATE TO INTENSE CONVECTION LAY OVER LAKSHADWEEP ISLANDS AREA AND COMORON AREA.

**PROBABILITY OF CYCLOGENESIS (FORMATION OF DEPRESSION) DURING NEXT 120 HRS:**

24 HOURS	24-48 HOURS	48-72 HOURS	72-96 HOURS	96-120 HOURS
NIL	NIL	NIL	NIL	NIL

**Remarks**

**(A) BAY OF BENGAL:**

ECMWF AND NCMU ARE INDICATING DEVELOPMENT OF A DEPRESSION OVER EASTCENTRAL & ADJOINING NORTH ANDAMAN SEA DURING 8<sup>TH</sup>-9<sup>TH</sup> JUNE WITH NORTH-NORTHEASTWARDS MOVEMENT TOWARDS MYANMAR COAST. BOTH THE MODELS HAVE DELAYED GENESIS COMPARED TO YESTERDAY'S RUN. HOWEVER, BOTH ARE INDICATING SLIGHT INTENSIFICATION OF SYSTEM AND MOVEMENT TOWARDS MYANMAR COAST. THE GFS GROUP OF MODELS IS NOT INDICATING ANY SYSTEM OVER BAY OF BENGAL. CONSIDERING GUIDANCE FROM VARIOUS MODELS, PROBABILITY OF CYCLOGENESIS IS KEPT AS NIL FOR NEXT FIVE DAYS.

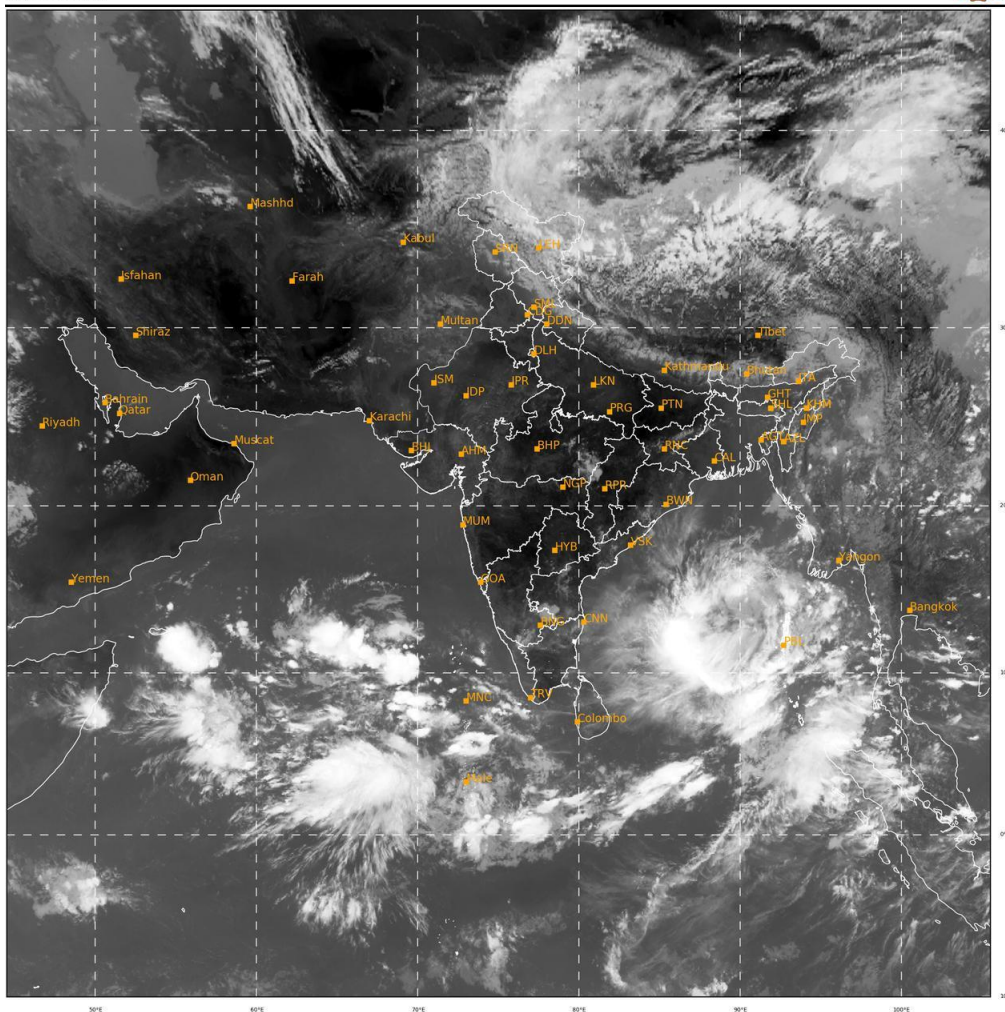
**(B) ARABIAN SEA:**

ECMWF IS INDICATING DEVELOPMENT OF DEPRESSION AROUND 7<sup>TH</sup> JUNE, NCMU AROUND 9<sup>TH</sup> & IMD GFS IS NOT INDICATING ANY CYCLOGENESIS. THERE IS LARGE VARIATION AMONG VARIOUS MODELS WRT AREA OF GENESIS AND MOVEMENT OF THE SYSTEM. ECMWF IS INDICATING GENESIS OVER EASTCENTRAL AS WITH NORTH-NORTHWESTWARDS MOVEMENT. NCMU IS INDICATING GENESIS OVER WESTCENTRAL AS CLOSE TO YEMEN-OMAN COASTS AND CROSSING OVER OMAN. CONSIDERING GUIDANCE FROM VARIOUS MODELS, PROBABILITY OF CYCLOGENESIS IS KEPT AS NIL FOR NEXT FIVE DAYS.

BOTH THE BASINS ARE UNDER CONTINUOUS WATCH. NEXT UPDATE WILL BE ISSUED AT 0600 UTC OF 4<sup>TH</sup> JUNE.

SAT : INSAT-3D IMG  
 IMG\_TIR1 10.8 um  
 L1C Mercator

03-06-2023/(0500 to 0527) GMT  
 03-06-2023/(1030 to 1057) IST



298 925  
 IMD, DELHI

Cloud distribution: (a) Isolated: <25%, Scattered:25-50%, Broken: 51-75%, Solid:>75%, Convection Intensity: (a) Weak: Cloud Top Temperature (CTT) >-25°C, (b) Moderate: CTT: - 25°C to -40°C, (c) Intense: CTT: - 41°C to -70°C and (d) Very Intense: : Less than -70°C  
 PROBABILITY OF CYCLOGENESIS (FORMATION OF DEPRESSION): NIL: 0%, LOW: 1-33%, , MODERATE: 34-66% AND HIGH: 67-100%  
 This is a guidance Bulletin for WMO/ESCAP Panel Member countries. Visit respective National websites for Country specific Bulletins

